



Statler
by *Gammill*®



Our machine is like this named Betty Mae

Preparing your quilt for the long arm quilter (LAQ)

*-Donna Simmons
Mimi N Me Quilting
615-339-4127*

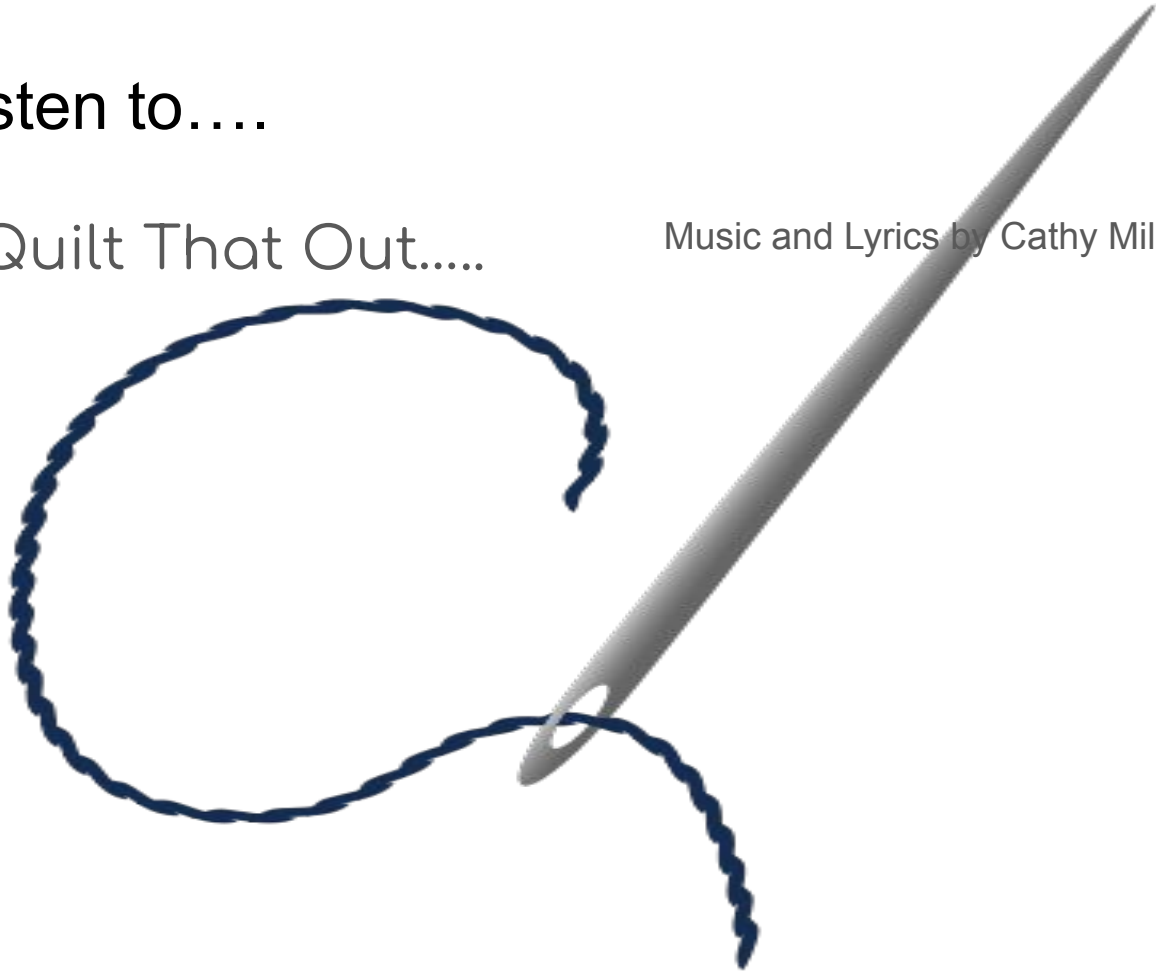
Sawtooth Flannel 51"x 51"



So let's listen to....

You can Quilt That Out....

Music and Lyrics by Cathy Miller



So do you Quilt by Check?

It's not a puzzle....

You choose the
pattern - your LAQ
is here to assist you.

Jigsaw Puzzle 51"x51"



Topics for today

1. Borders
2. The Quilt Sandwich
 - A. Top
 - B. Back
 - C. Batting
3. Design/Quilting options

Quilt: PQG Diamonds and Pearls

Raffle Quilt for 2022



BORDERS

Before we

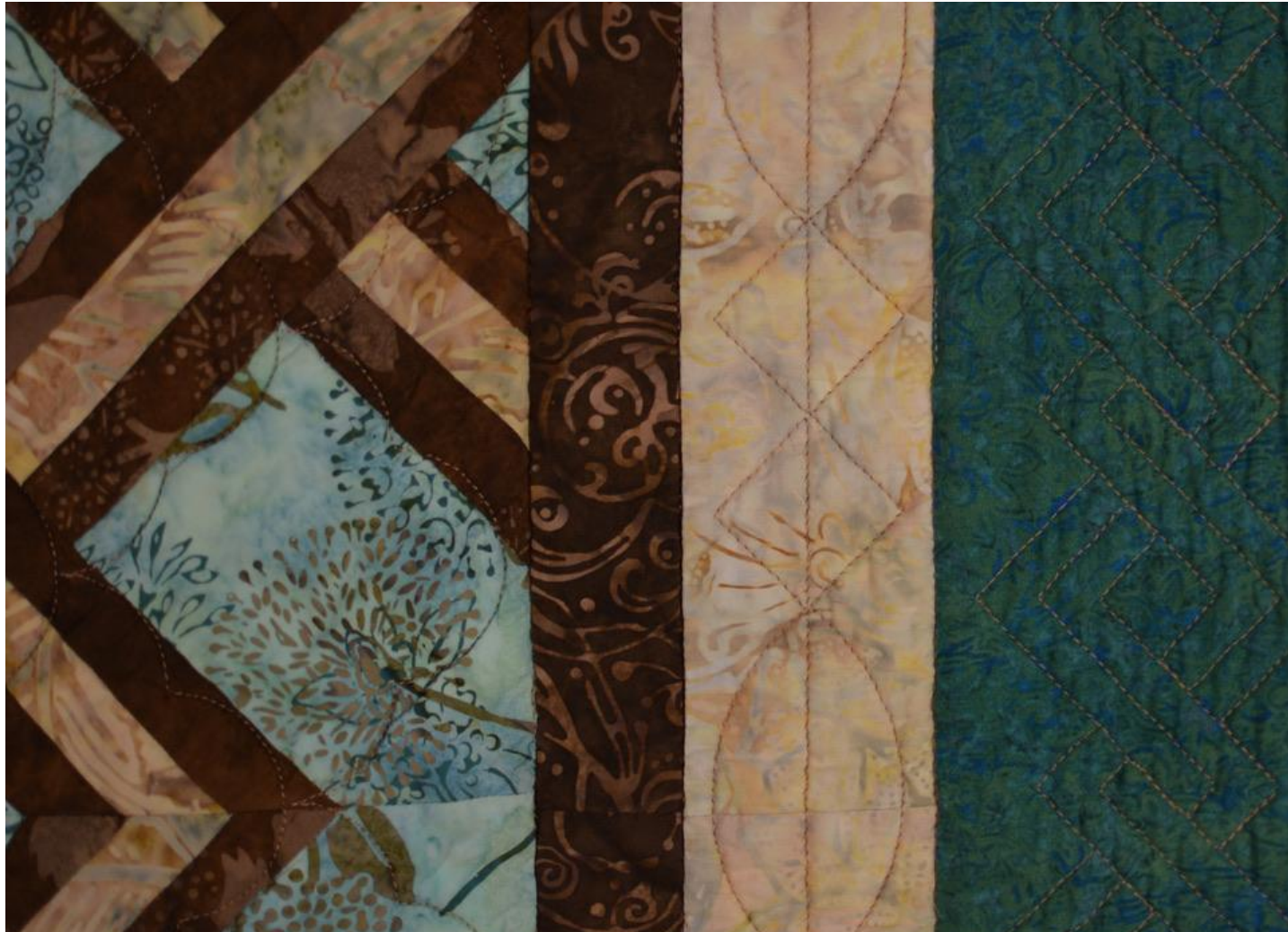
*Jump into the
quilting,*

Let's talk about

How to

add a border

Murano 60" x 68"



Not this kind of a Sandwich...but a Quilt
Sandwich



Is your Quilt Top

WRINKLED?

Well then....

Do This





Grooming your Quilt

Quilt back

**The Back should be 4 " larger
that the top, bottom & each side**

Or

**8" longer and 8" wider than the
top**

Example:

Top is 60" x 60 "

Back should be at least 68" x 68"

***check w/ your LAQ if they have different
requirements**

Fanfare Log Cabin 58" X 58"





Batting

The yummy middle
of the quilt sandwich

Size - at least the
same size of your
back



Quilting patterns

Endless opportunities

EDGE to EDGE

Also called all over design

The stitching pattern repeats over the entire quilt

See the loops

Triangle Tango 85" x 94"



Quilting not Competing with Piecing

Linear Piecing and Curved
Quilting Designs - These
compliment and do not
compete.

Good Vibrations 51" x 61"

Quilting design Snails



Snowflakes

This back illustrates the snowflake edge to edge pattern....And while very appropriate for the top this pattern takes a longer time to stitch and will demand a higher price per inch...

Snowflake Sampler 70" X 70"





NAUTICA 95" X 95"



Modern Edge to Edge

Even though the pattern is edge to edge it doesn't have to have a traditional look

This pattern is called modern curves.



Picket Fence 69" X 90"

How to determine the cost

First how many square inches are in your quilt.

Measure the length and width. Multiply (yes math) length (in Inches)

Times the Width (in Inches) to obtain
Square inches.

Then multiply the square inches times the price per square inch.

EX: 60" Length x 60" Width = 3,600 square inches

3,600 sq. inches x \$0.025 a square inch = \$90.00

Custom Quilting

The Center motif in the negative space is a feathered block, while

The Flying Geese and the negative space around the stars differ.

Pashmina 76" X 76"



Another example of
custom quilting

Each intersection had
to be indicated by the
LAQ in this Tumbling
Block quilt



Tumbling Blocks 52" X 74"

5 patterns

This wall hanging features:

2 different block quilting patterns

Meander in setting triangles

Stitch in the ditch along sashing

Cross-hatch stitch in border

Dutch Windmills 34" X 40"





BUTTER CHURN 71" X 79"



Broken Lone Star 92" x 92" Extra wide back





Labyrinth 110 " x 110" BIG QUILT with BIG PIECES



Glacier Star 60" x 60"

Thanks for
listening

Now time for your
Questions

Prairie Star 83" x 83"



You Can Quilt That Out

If I drop it off after work, can I wait for you to quilt it? Or should I come back this evening after bowling?

I finished it today in a class of 27, they'll be here next week with 7 only.

The technique was kind of strange but I did the best I could, the teacher said my seams were somewhat odd. The block aren't straight , they are tents for sleeping 8. The only perfect quilts are made by God