



PALMETTO QUILT GUILD

February 2012

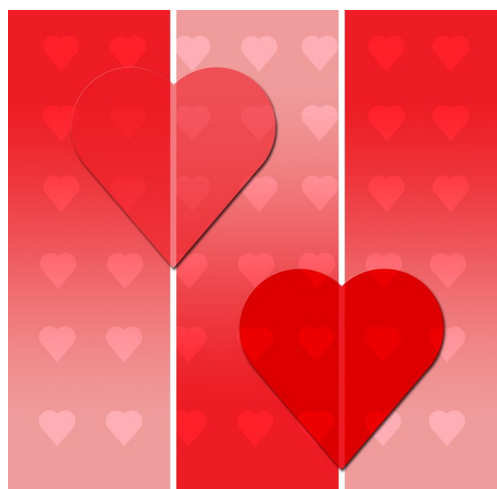
www.palmettoquiltguild.org

President's Letter

Do you ever wonder why we have the quilt show? Is it a shopping expedition, or just to see lots of gorgeous quilts all in one place? For inspiration? Actually, it is our Guild's main source of funding. Over two thirds of our entire budget comes from the Quilt Show. What we make at a Show funds the Guild for the next two years. And, the main source of income from our Show is sales of tickets for our Donation Quilt. Originally a small committee of very dedicated members spent vast amounts of their time and money hauling the Donation Quilts all over the country to sell tickets at various quilt venues. These few individuals paid their own transportation and lodging without once asking for reimbursement. Funny how it worked, but after a couple of Quilt Shows it became quite difficult to find members who were willing to donate several days and several hundreds of dollars each to haul these quilts around for the benefit of the Guild. So a solution was found. This solution was to have each member of the Guild sell \$25.00 worth of tickets for each Quilt Show. Being the truly democratic group we are, we voted on this at an open meeting and it was unanimously passed. Some members save themselves the effort of "selling" the tickets and purchase the tickets themselves, giving themselves a chance to win an absolutely beautiful quilt (because our Guild always does such beautiful work!) while at the same time helping to fund the many fabulous activities the Guild provides its members. Every judge who comes to our show has commented that it is very obvious we have wonderful instructors at our workshops because of the wide variety of techniques exhibited and the high quality of our quilts. We do pride ourselves on offering the very best in speakers and workshop instructors. Because we recruit our speakers/instructors from the "A" list of speakers/instructors, we pay the "A" list prices. In 2002, 2004

and 2006 when the economy was in much better shape, Quilt Show profits were high and our costs were low. Starting in 2008, our Quilt Show profits reflected what was happening in our nation. The economy had soured for everyone, including the Guild, and our Quilt Shows were no longer funding two thirds of our expenditures. We were lax for a few years about collecting the Donation Quilt ticket money from our members. This is no longer an option. Our monetary "cushion" had flattened out to a "place mat." We have to collect the ticket money from every member. This is the month we vote to pass our yearly budget. Please take time to review the proposed budget. Note the "money in" as opposed to the "money out." This clearly shows what it takes to provide the wonderful benefits this Guild has provided to its members for so many years. So, please send your ticket money to Lona Patane or drop it off at the February meeting. The Guild is counting on you! And just think, you are saving those poor members who would have been schlepping the quilt around the country and paying quite a bit for the privilege of doing it!

Linda



Programs

Meeting place: Christ Lutheran Church 829 William Hilton Parkway. Hilton Head Island SC.

Note: Workshops will be held at our new QPS location, #305 Pineland Station (former site of Marco Polo).

February 16 & 17, 2012: **Karen Eckmeier**, www.kareneckmeier.co

Karen's lecture will be.....oops! My Edges are Showing

Is it straight-stitch appliqué or raw-edge collage? No matter what you call it, the edges of the fabric are bound to fray, but that's OK! From early hand appliqué pieces, up to her current straight-stitch appliqué series, Karen's presentation will definitely give you some ideas on where to find inspiration and how to deal with those scary edges encountered along the way.



Don't miss Karen's exciting and fun workshop.....Let's Make Waves!



This technique workshop is an introduction to playing with Layered Curves and Peaks. Students will learn how easy it is to create a textured fabric with wild curves and dramatic points using Karen's layered/topstitching approach. You will be able to use your Layered Waves fabric in traditional or contemporary designs, as impressive borders, in eye catching wearables, market bags, and much, much more! Students will be able to complete an approximate half yard+ piece of Layered Waves fabric to be used for a project of their choosing. All Levels of Quilters welcome!

March.....The Hilton Head Quilt Festival

2012 Workshop Sign-up

Cost: \$40 Members; \$50 Non-Members

To sign up for any workshop(s), send the registration form below to Maureen Mack, 5 Covington Park, Hilton Head, SC 29928. Enclose a check payable to Palmetto Quilt Guild. Questions? Call Maureen at 422-3047.

Your check is your reservation. **PLEASE READ THE CANCELLATION POLICIES BELOW.**

Name of Workshop _____

Date of Workshop _____

Your Name _____

Phone # _____ E-mail _____

You may send the supply list via e-mail: Yes ___ No ___

Address _____

I HAVE READ AND UNDERSTOOD THE CANCELLATION POLICIES. Signed, _____



Workshop Cancellation Policy:

Cancel **2 months or more** before workshop: Full Refund or Apply Payment to future class.

Cancel **after 2 months but prior to 1 month** before workshop: No Refund, can Apply Payment to future class or sell place to member.

Cancel **1 month or less** before workshop: **NO REFUND AND CANNOT APPLY PAYMENT TO FUTURE CLASS.** May sell place to member.

QUILT SHOW

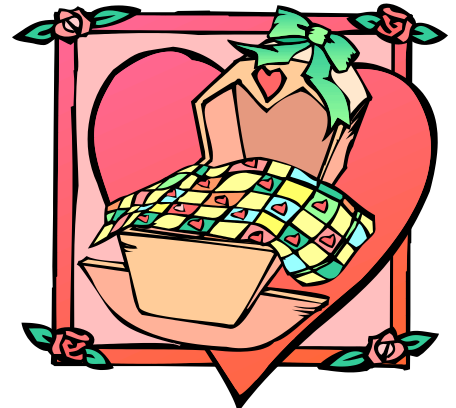
QUILT SHOW

Consignment The consignment area is for guild members to sell items to the public and each other for a reasonable fee of 10% of the sale price. We will have a larger area this year. Drop off for items to be consigned will be at the same time and place as drop off for quilts to be displayed/judged (7:30-9:30 AM, Wednesday, March 28th). Pick up of unsold items will be at the same time as pick-up for displayed quilts. In past years, we have successfully sold small wall-hangings, small quilts, sewing machine covers, featherweights, quilted handbags, unfinished quilt tops, and finished quilt blocks. The club usually will issue a check for your sales within one week of the quilt show.

Peggy Geraghty & Janet Wurtz

Dear Ladies: Barbara Jaques and Rosemary Smith wish to thank you for your generous donations of Fat-quarters at the last meeting. They received 100, and can now make some great baskets for the Silent Auction.

Carol Lee, Show Chair



Help Wanted

Attention Guild Members: There is still a vacancy for the office of Historian. The duties would include taking pictures of some of our events and keeping a scrapbook for 2012. I would greatly appreciate one or two members volunteering. Beginning in May, we will also need a new QPS Manager. This is a really big job and is better shared, so talk to your friends and volunteer as a team if possible. You might want to check with Sue Adamovitz regarding what's involved. Thank you.

Ann White (Nominating Chairman) 671-3755 or jimann@roadrunner.com

Community Service

We had a great turnout and great productivity at our first 2012 Community Service Bee. Twenty-two gals came and completed twenty-two quilts, cut batting for about 30 more quilts, cut blocks for 20+ tops and matched about another 30 to 40 quilts and backs. Having the larger space was the key to our productivity. That said, let's do it again! **The next Community Service Bee is on Tuesday, February 21st**, the week after the guild meeting. Doors open at 9am and close at 4pm but you can come when you want and stay as long as you can. Since we now have all of the tables set up in the workshop area – if you can – please bring your machine. You can drive right up to the back door and that makes 'lugging' so much easier. However, we always need more folks without their machines to keep the assembly line going. Look forward to seeing you at QPS on **February 21st**!

Peg Weschke



Classified

FOR SALE: Two Featherweight 221 machines with cases, manuals, bobbins, attachments, etc. Asking \$300 each. Contact Mindy Weaver, 843-341-9443 after 6 p.m. Mindy is leaving the area on March 25, so act fast if you're interested.

ESTATE SALE: Roger Healey wishes to find good homes for some of Connie's equipment. Items include: Janome 6600P machine with attached flexlight, \$840; Singer Featherweight with original wood carrying case, \$400; Vintage Precision Sewing Machine with carry case, \$200; EuroSteam Iron (never used), \$200; Rhinestone applicator and supply of crystals, \$25. Contact Carole McNamee, 843-342-9284 or cmcnamee@hargray.com.

Carolina One Stop Shop Hop

Saturday, February 25, 2012, 9:00 a.m. – 4:00 p.m.

\$2.00 admission

University of South Carolina Lancaster

Bradley Arts & Sciences Building

476-E Hubbard Drive

Lancaster, SC 29720

Over 20 vendors – Huge Raffle Basket

Fiber arts – threads – notions – tons of fabrics – embellishments – buttons – vintage linens – baked goods – creative ideas

For information, contact

Lys Hart (violetta42000@yahoo.com)

or

Lynn Baker (lbaker@mailbox.sc.edu)

Cobblestone Quilters

Sponsored by the Cobblestone Quilters Guild, A Celebration of Quilts 2012: “Southern Comforts” will be held March 2-3 at the Gaillard Auditorium.

The event will be judged by nationally known quilter Lorraine Covington, certified by the National Quilting Association, Inc. More than 250 quilts and quilted items will be on display from local and regional artists. Quilts to be exhibited will include antique quilts, bed-size quilts, wall quilts and wearable art. In addition to sponsors Accent Sewing, Margiotta’s Sewing Center, Memory Lane Quilting, People, Places & Quilts, Quilters Cottage, and Sew ‘n Sew, there will be a total of 15 vendors. The show will run from 10:00 am to 6:00 pm daily. Admission will be \$7.00 daily or \$10.00 for both days.

A silent auction of quilts and quilt-related items will be held to benefit The Dee Norton Lowcountry Children’s Center.

For additional information, go to www.charlestonquiltguild.com.

PALMETTO QUILT GUILD 2012 MEMBERSHIP INFORMATION FORM

(Please fill in and return with your check for \$25 made out to Palmetto Quilt Guild to:

Pat Whitmore, 1 Loggerhead Court, Hilton Head Island, SC 29926

Name _____ Date _____

New Membership

Renewal Membership

Mailing Address _____

Plantation _____ Telephone (____) _____

Small Quilt Group Participation (List names of groups) _____

National Quilt Memberships NQA _____ AQS _____ Other _____

I would like to serve on the Quilt Guild Board _____ * Positions see below *

President _____ Vice Pres _____ Secretary _____ Treasurer _____ Newsletter _____

Membership _____ Programs _____ Nominating _____

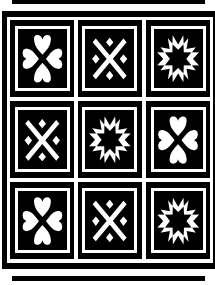
Which PQG committee would you be willing to serve on? Please check:

Historian _____ Sunshine _____ Outreach _____ Publicity _____ Nominating _____

Community Service Project _____ Quilt Show Committee _____ Quilt Show Volunteer _____

E-mail address for Newsletter: _____

If you haven't yet renewed your membership for 2012, please do so NOW! Remember, you must be paid up to enter a quilt in the show in March and/or to receive the newsletter after February 2012. To save postage, you may bring your completed form and check to Pat at the January or February Guild meeting.



Carole McNamee, Editor
301 Fort Howell Drive
Hilton Head Island, SC 29926
www.palmettoquiltguild.org

Coming in 2012

February 16, 2012	Karen Eckmeier, "Oops, My Edges Are Showing!" Lecture
February 17, 2012	Karen Eckmeier, "Let's Make Waves" Workshop
March 30 & 31	<i>HILTON HEAD QUILT FESTIVAL</i>
April 19, 2012	Rob Appell, "Quilts from the Sea & Beyond"
April 20, 2012	Rob Appell, "Endangered Species Quilts" Workshop
May 17, 2012	Wendy Butler Burns, Lecture TBA
May 18, 2012	Wendy Butler Burns, Workshop TBA
June 21, 2012	Karen Stone, Lecture TBA
June 22, 2012	Karen Stone, Workshop TBA
July 19, 2012	Member Techniques